

COFFEE GRINDER E64 WS | QUICK GUIDE

Hemro International AG Thurgauerstrasse 80 | 8050 Zurich, Switzerland
T: +41 44 864 18 00 | F: +41 44 864 18 01 info@hemrogroup.com | www.hemrogroup.com

Detailed information at:

Product Page



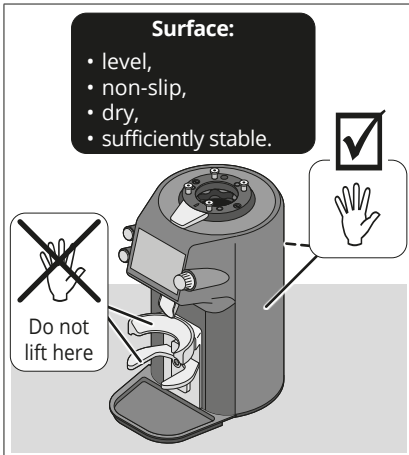
Instruction Manual



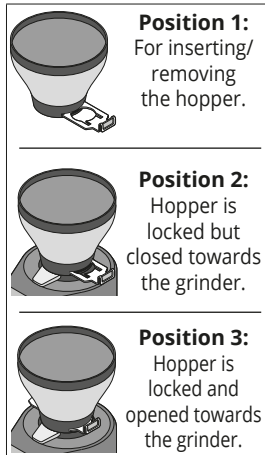
Videos



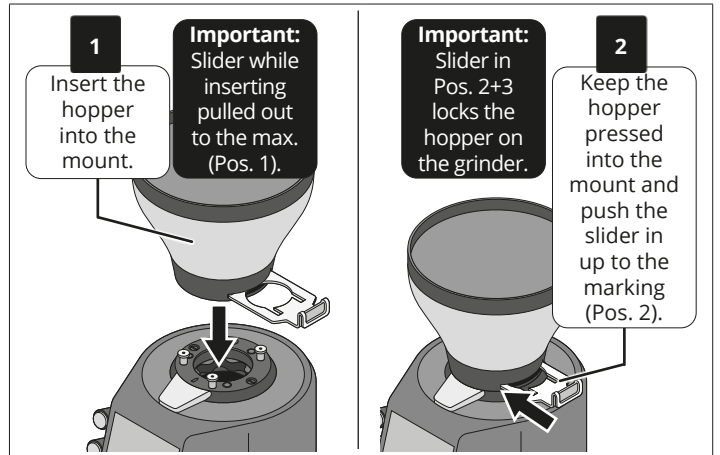
Setting Up The Grinder



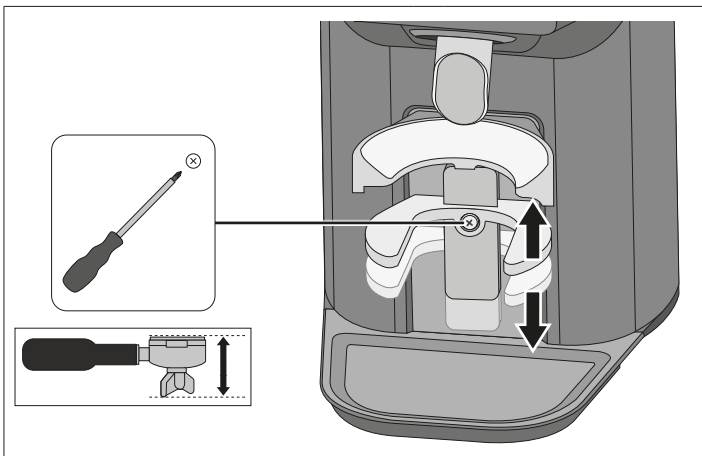
Slider Positions



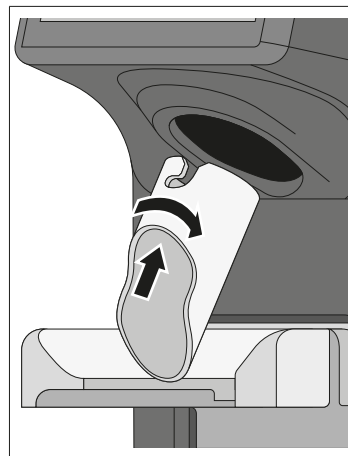
Inserting The Hopper



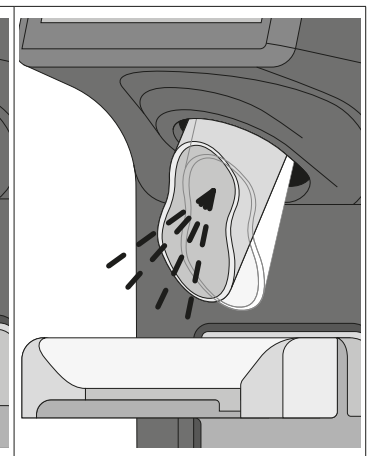
Adjusting The Portafilter Support



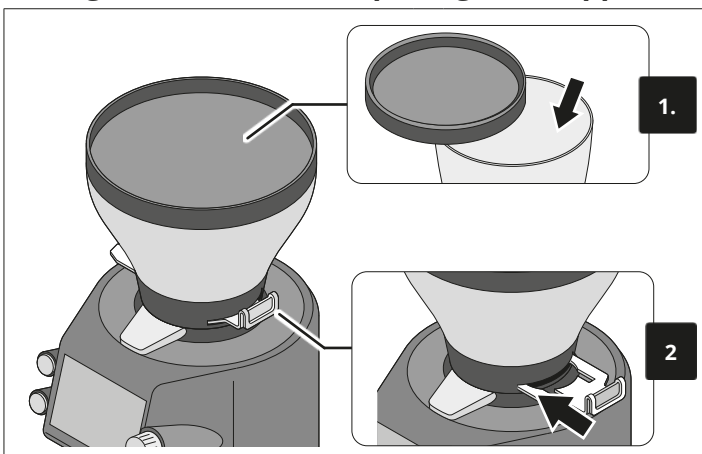
Inserting The Spout



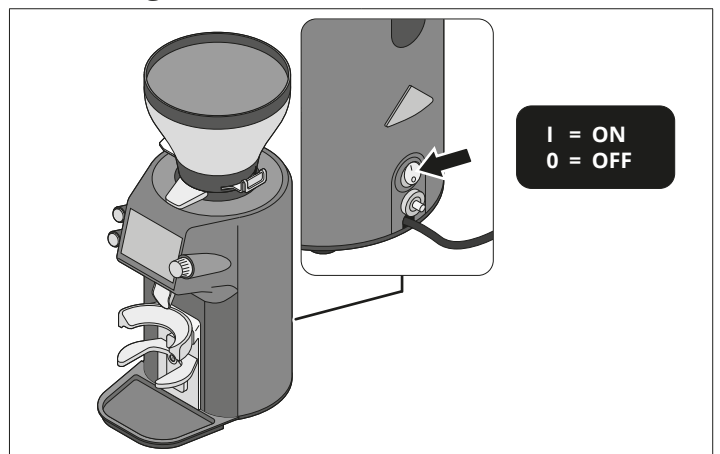
Aligning The Spout



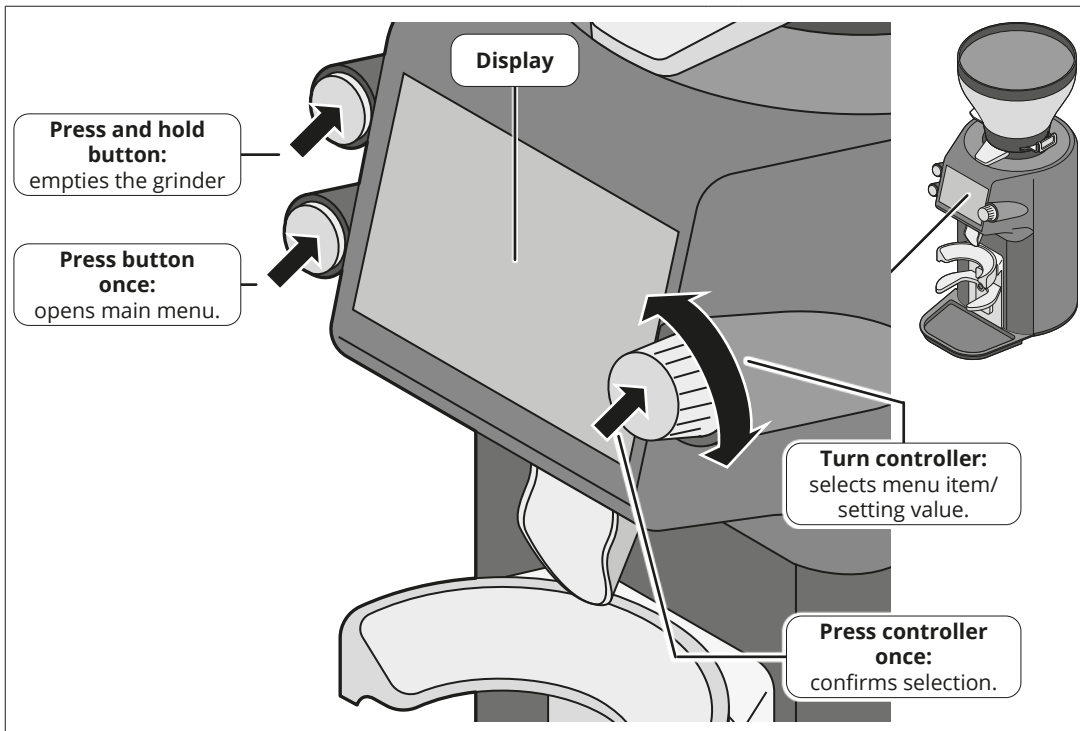
Filling With Beans And Opening The Hopper



Switching The Grinder On/Off



Operating The Grinder / Main Functions Of The Operating Elements



For detailed operating information, see:

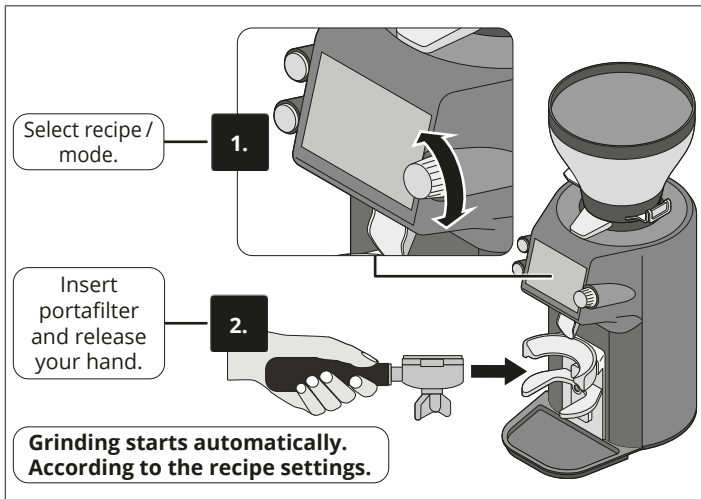
Software manual



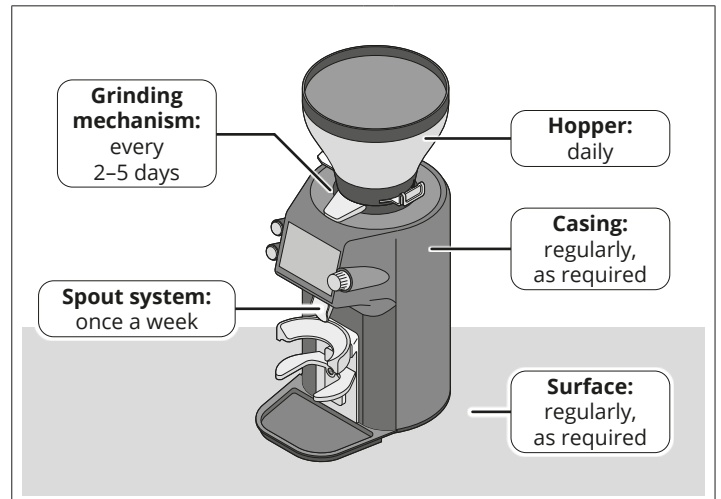
Instruction manual



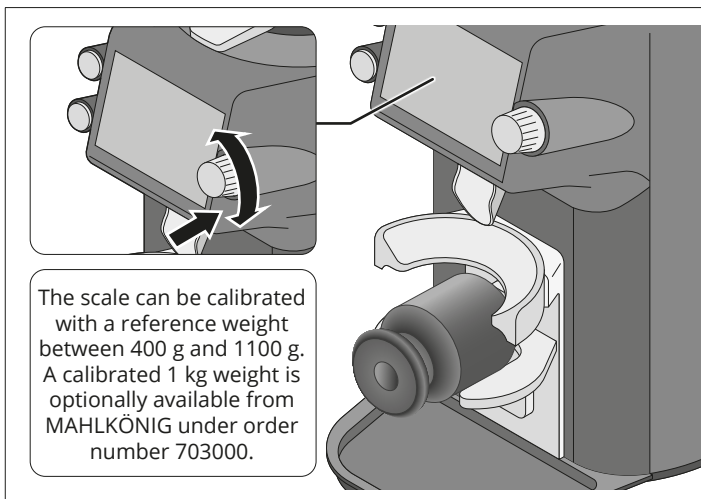
Starting The Grinding Process



Regular Cleaning



Calibrate The Load Cell (As Required)



Technical Data

Model:	E64 WS		
Voltage frequency :	100 V 50/60 Hz	110-120 V 60 Hz	220-240 V 50/60 Hz
Protection type / Protection class:	IPX1 / I ⚡		
Sound emission value¹:	65 dBA		
Grinding capacity (fine-coarse)²:	2-3.5 g / s		
Max. permitted operating cycle³:	6 sec on / 54 sec off		
Max. daily output:	2.5 kg		
Dimensions (W × H × D):	154 × 268 × 218 mm		
Weight (net):	5.8 kg		
Max. hopper filling quantity⁴:	250 g		

¹ Noise level measured under controlled laboratory conditions.

Actual values may vary depending on the operating environment.

² The grinding capacity depends on several factors, including the selected coffee bean (e.g. roast level, density), the chosen grind size, and the power supply.

³ Exceeding max. operating cycle may cause motor shutdown to protect internal components. Short extended runs are possible but must be followed by correspondingly longer pauses to prevent overheating or damage.

⁴ Standard hopper.